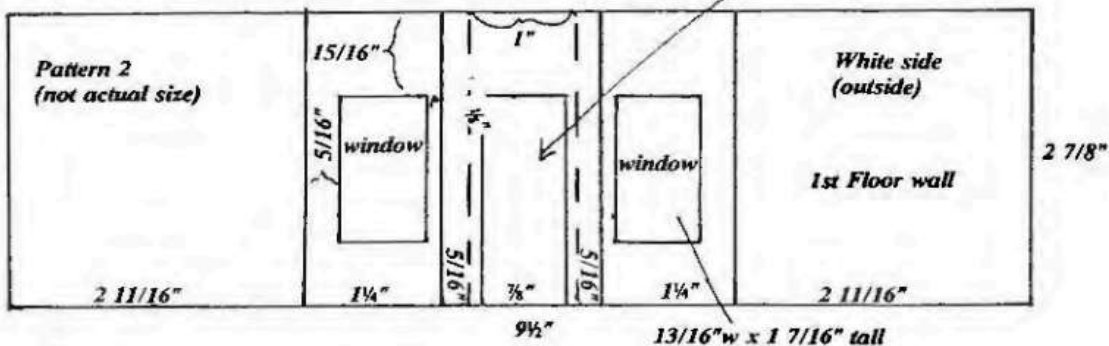
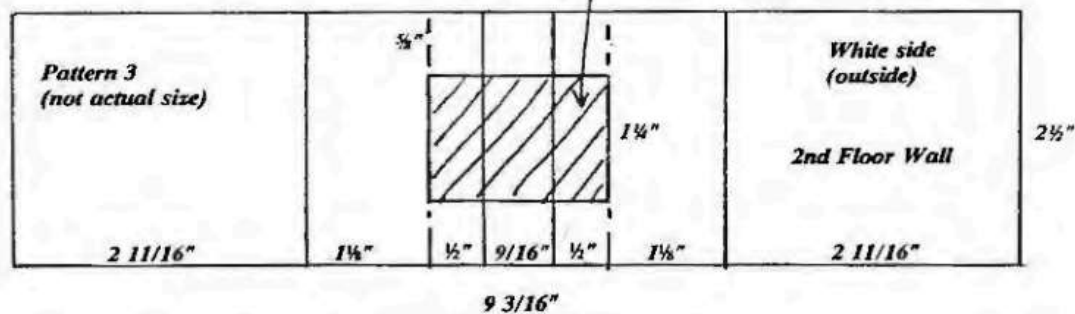


Score solid lines on white side  
Score dotted lines on green side

Cut out for door  $7/8"$  wide x  $2\ 1/16"$  tall



Cut out for bay window



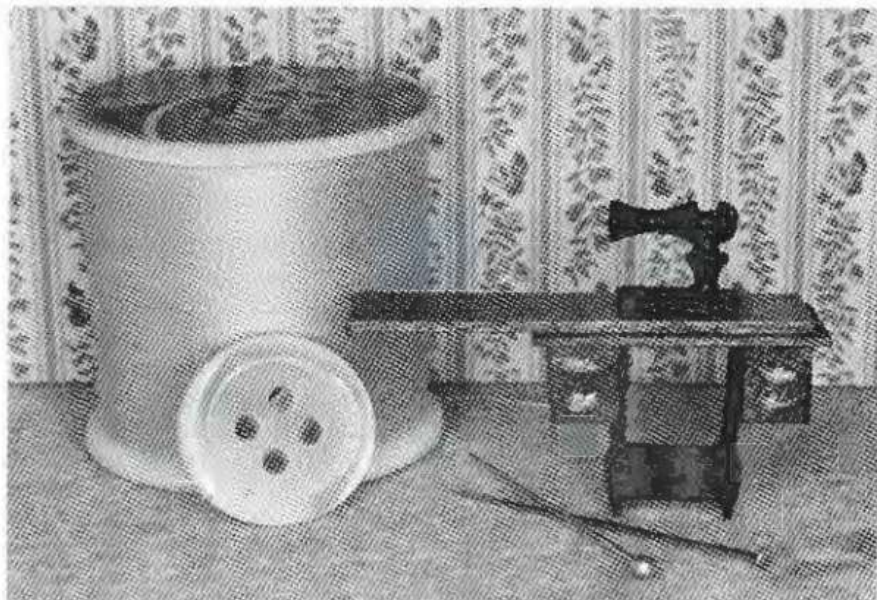
## $1/4"$ Sewing Machine

by Debbie Young  
Los Gatos, California

One of the most exciting things about building furniture in  $1/4"$  is the simplicity. By putting together a few pieces of wood and some jewelry findings, you can create a darling sewing machine. I like to use available woods and trims for my furniture; so, take a closer look at trims and often, right before your eyes, they can become pieces of furniture.

### List of Materials

- basic tool kit
- $2\ 1/2"$  of  $1/32"$  x  $1/2"$  basswood
- $1"$  of  $1/4"$  x  $3/16"$  basswood
- $1\ 1/4"$  of  $1/32"$  x  $3/16"$  basswood
- 2 teardrop shaped jewelry findings
- "tiny turnings" #2000
- lace paper doily (gold if available)
- black paint
- stain



*Continued on following page . . .*

## Instructions

1. I use a "chopper" to cut all of my thin pieces of wood it is worth it's weight in gold. If you don't have one, measure carefully and use an Xacto knife and a ruler or a miter box. Out of a piece of  $1/32"$  x  $1/2"$ , cut one piece  $7/8"$  long. This will be the top of the sewing machine cabinet. Cut another piece  $1 1/4"$  long and then rip the width to  $7/16"$ . This will be the long "hinged" top of the cabinet.
2. Out of the  $1/4"$  x  $3/16"$  basswood, cut two pieces  $3/8"$  long. These will be the sewing machine drawers.
3. Out of the  $1/32"$  x  $3/16"$  cut two pieces  $1/4"$  long. These will be the drawer fronts. (End grain does not stain very well, so to give the piece a more finished look, I cover it up.) Also out of the  $1/32"$  x  $3/16"$  cut two pieces  $3/8"$  long. (One will be the base of the machine, the other will be the treadle.)
4. The teardrop shaped jewelry findings that I purchased were  $3/4"$  high. They were also slightly curved, so I pounded them flat with a rubber mallet before trimming them. Trim the bottom flat so the machine can stand easily. Trim off the top hole as well. The finished size is  $9/16"$  high.
5. Using "tiny turnings" #2000, cut as indicated in illustration to make sewing machine pieces.
6. Trim off all wood "feathers" with sharp scissors and sand as necessary with 400 grit sandpaper. Be careful not to round the edges.
7. Glue the drawer fronts onto the drawers and sand flush.
8. Slightly bevel the sewing machine top on all sides and glue drawer units to underside. The drawer units should be spaced about  $1/16"$  in from the sides and centered front to back.
9. Glue long "hinged" top on top of the cabinet about  $1/16"$  from the right side (as you look at it) centering front and back. The over-hang should be on the left as you look at the machine.
10. Glue the sewing machine parts together and glue onto base.
11. Paint sewing machine, jewelry findings, and remaining  $3/8"$  long piece black. Stain sewing machine cabinet as desired.
12. Glue jewelry findings onto inside of drawers making sure they are level. Glue treadle piece between findings, trimming as necessary to fit. Glue sewing machine to top.
13. To make drawer pulls, cut out tiny sections from a gold paper doily. If you can't find gold doilies, color a white one with a metallic gold felt pen. Glue two on each drawer unit, one above the other.



Illustration #1



Illustration #2

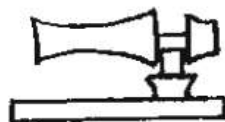


Illustration #3

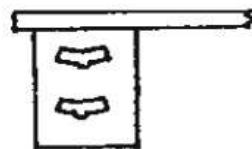


Illustration #4

## 1/4" Scale Ruler

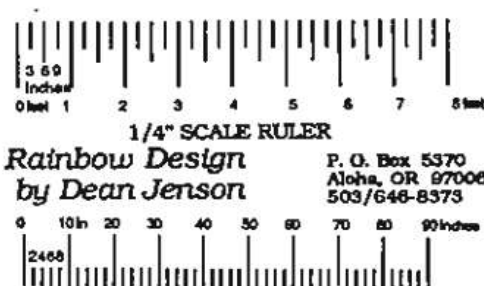
To measure a miniature in  $1/4"$  scale, use the top scale to measure in feet, the bottom scale to measure in inches.

For example: To determine the size to make your  $1/4"$  miniature, measure the full size piece. If a full size table is 30 inches high, use the bottom scale to read 30 inches for the height of your miniature table. If you wish to determine if a doll is the proper height for  $1/4"$  scale, use the top scale to measure the doll.

If you use an office copier to copy this ruler, keep in mind most copy machines do not make an exact size copy - they are usually slightly larger or smaller than the original. To check the accuracy of the copy, use a standard ruler. The 8 foot mark should be exactly 2 inches.

Rainbow Design will furnish a  $1/4"$  scale ruler printed on card stock at no charge. Each request MUST include a SASE (Self Addressed Stamped Envelope). Only one ruler per request will be filled. All requests received by July 1, 1988 will be filled - after July 1st requests will be filled as supplies last. (Canadian readers please enclose 25 cents instead of SASE if U.S. postage stamp is not available.) A free ruler will also be included with any  $1/4"$  Hat Shop Kit or  $1/4"$  Furniture Kit ordered.

Send request to: Rainbow Design by Dean Jenson  
P.O. Box 5370  
Aloha, Oregon 97006



Rainbow Design  
by Dean Jenson

P. O. Box 5370  
Aloha, OR 97006  
503/646-8573

To order  $1/4"$  Hat Shop Kit,  $1/4"$  Furniture Kit or  $1/4"$  Hat Stand see reverse side of regular order form in the back of this GAZETTE.