

# REGISTERED WORKSHOP

## The Miniaturist • 1" scale

By Ellen Scofield, Ellen's World, Hudson, New York

She could be you on your way to a mini class. She's got her apron and tote full of supplies.

### Supplies Needed

- A lady doll kit, any from your stash would do
- Lightweight cotton denim 10" x 5"
- 2 different color t-shirt material 3" x 3" for tank, 5" x 10" for cardigan
- Muslin 2" x 4"
- Crochet cotton 12"
- Twill fabric – 3" x 3-1/2"
- Contrast cotton fabric – 3-1/2" x 10"
- 2 - 1/4" pom pom for knees
- 2 - 1/8" pom pom for elbows
- Brown paper bag
- 2" x 2" foam core or wood
- Miniature magazine you will cut
- Card stock
- Household broom fibers for paint brushes and pencils
- Assorted paints to stain the apron
- White glue (Aleen's Original Tacky®)

Doll kits and full kits are available on my website, [www.ellensworld.net](http://www.ellensworld.net), many faces available. Email me with any questions, [ellenshouse@mhccable.com](mailto:ellenshouse@mhccable.com)

### Basic Instructions

READ EVERYTHING!!!! I suggest you make a copy of your pattern and cut that one. This way you have the original to use again for future projects or reduce it for use on 1/2" and 1/4" scale dolls.

### Suggestions

- Keep a wet wash cloth next to you to keep your hands clean and free of glue. Try working with the fabric in your hands and not on the wax paper, this keeps the fabric out of the glue spots.
- Use a monoject 412 glue syringe or a toothpick. I have used Allen's Tacky® (gold bottle) for over 25 years, it has never discolored or gotten brittle. I recommend this but if you have a favorite you can use it.

### Definitions

- **Finger creasing** – before you hem and edge crease the fold with your thumb nail and index finger.
- **Finger pressing** – again with your thumbnail and index finger - press a seam flat.



- **Glue sewing** – apply a line of glue about 1/8" from raw edge of fabric and with the side of the glue syringe or toothpick fan the glue toward the raw edge. This seals the edge and thins out the glue – less chance of fabric getting a glue stain.

### Dressing your Miniaturists

Assemble your doll parts – you decide here height – between 5" and 6" (tall lady!!). Her arm length, (from tip of the right middle finger to the tip of the left middle finger, held out straight to the sides) should be a 1/2" longer than her height (looks better). The combined arm length (across the doll body) of a 5" doll will be 5-1/2 inches. Thus one arm will be 2-3/4" long. Glue a tiny pom-pom (1/8") to each arm at the elbow and a small pom-pom (1/4") to each leg at the knee. Let dry thoroughly.

### Capris or Pants – you decide

1. Glue sew front and back crotch seam and press open.
2. Glue-sew front to back – the inside leg seam.

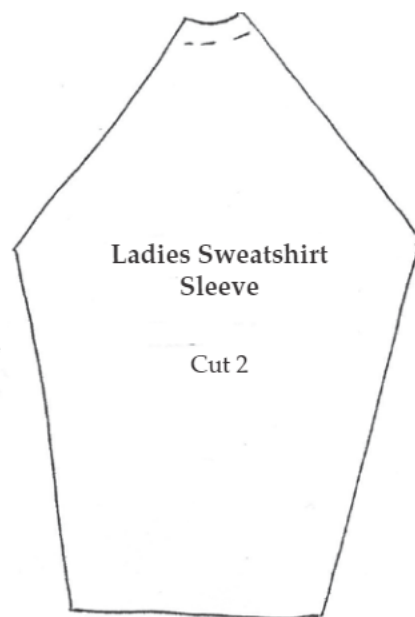
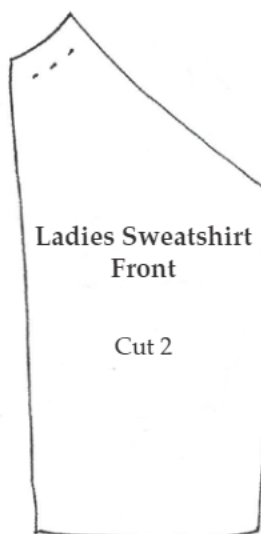
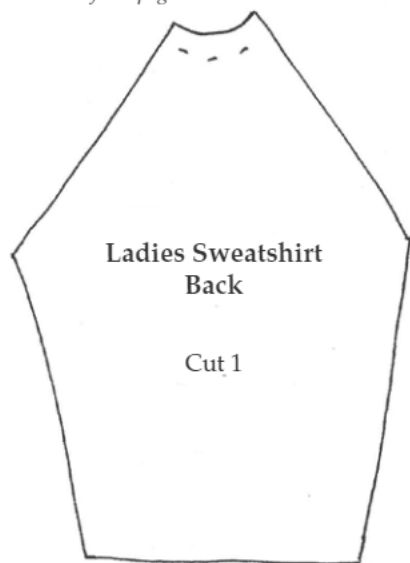
3. Try on- check knees – trim if necessary.

4. Check length – decide on pants or capris. If the fabric is heavy apply a thin layer of glue to the wrong side with an old credit card – let dry and trim to desired length. Do this to the top of and the bottom of the pants pieces. If fabric is light weight finger crease hem (glue sew later).

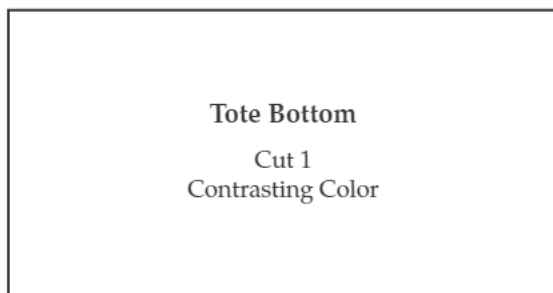
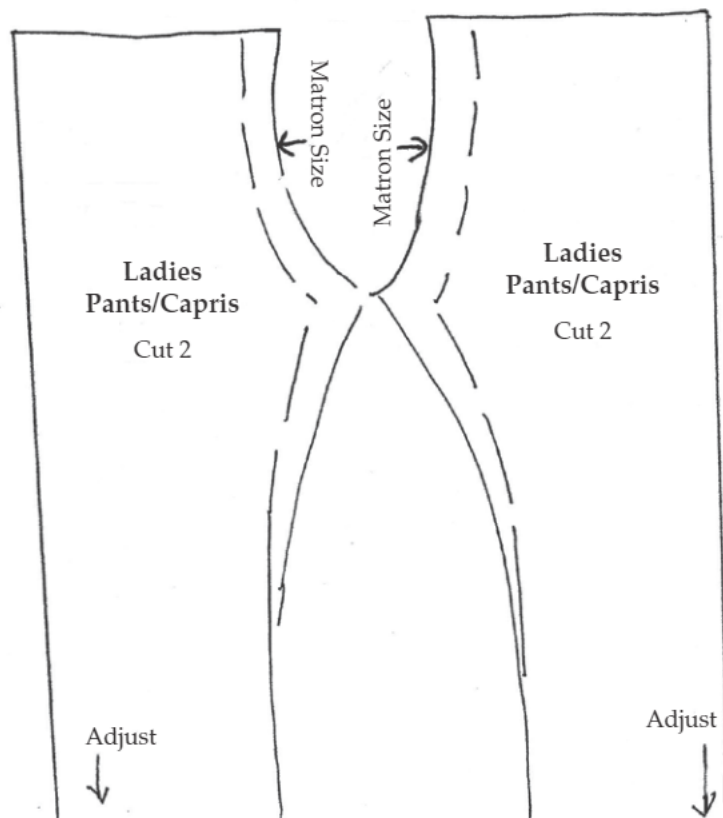
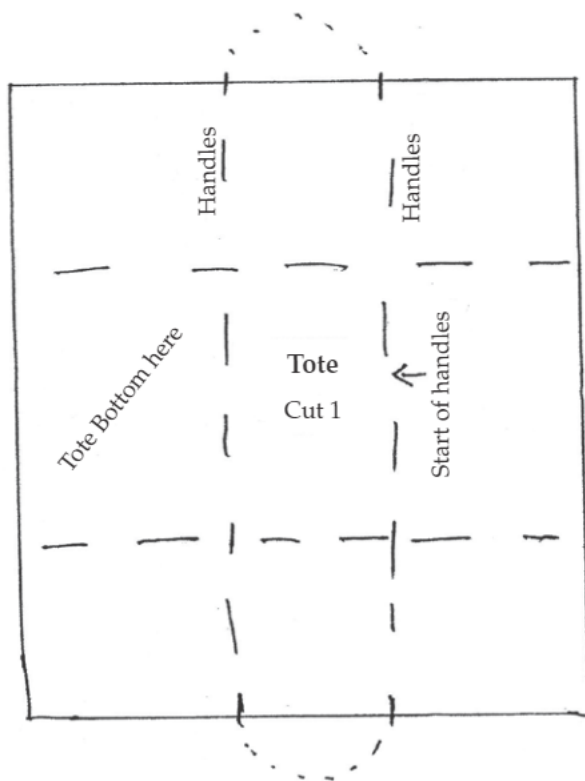
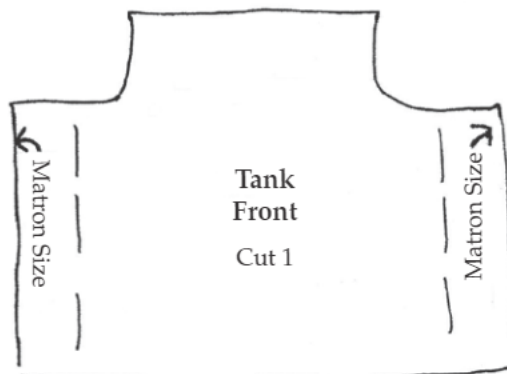
5. Try on again check sides. The front side seam should be straight along the side. You may have to trim (to avoid bulk). Glue hem the front side edge of the pants – this will create the side seam when you glue them on the doll.

6. Check knees and length again. If the waist is big you can take a glue dart after they are glued on your lady. If her backside looks flat you can pad it out with a part of a cotton ball.

—Continued on next page



**Tote Handle**  
Cut 1 of contrasting color 10" x 1 1/2"



## The Miniaturist

—Continued from page 37

- Do the bottom hem of the capris or pants \*\*Remember if it's heavy denim you've sealed the edge and you can just cut it to the right length.
- Apply glue to the folded inside edge of the side seams of the pants and while on the lady hold the back of the pants on her and lay the glued edge over the back. Hold with pins if necessary.
- Glue in a back dart if necessary. The top edge of the pants are covered so you don't have to finish it off.

### Tank

The tank is a false front.

- Glue hem the top and bottom edge. Do not stretch.
- Decide on tank placement - how high up on chest.
- Glue in place at top edge - but don't put glue right on the edge - put it about 1/16" - 1/8" below top edge - it will look more natural.
- Put a dot of glue at the lower corner of each side of the tank and glue it to the pants.

### Sweatshirt Jacket

Keep pieces in order - they look similar.

- Glue sew each sleeve to back piece - along raglan edge.
- Glue sew fronts to the sleeve - along raglan edge.
- Press open. Try it on your lady to check sleeve length.
- Glue hem neck edge - DO NOT STRETCH OUT - use alligator clips to hold.
- Glue sew arm and side seam, let dry.
- Press side seam of jacket.
- Hem sleeve edge, let dry. Turn right side out with tweezers or a hemostat.

*HINT: Slip the sleeve on to a stick pen and turn the edge up a 1/4".*

- Glue hem lower edge.
- Glue hem both front edges. Glue hem lower edge.
- Put on your lady - if you want the sleeve pushed up on her arm - adjust till pleased with the result and glue in place or take a few hidden stitches to hold them up.
- Paint shoes with acrylic paint.

### Apron

- Glue hem the lower hem to the RIGHT SIDE.
- Glue hem the curved sides.
- Glue hem the top edge.
- Glue sew the pocket part of apron to the apron along the sides. Now glue hem these sides.
- Mark the pockets and glue or sew them in place.
- Add the ties to the sides and the neck strap use crochet cotton.
- Aging the apron: use different color paint and just dab it on with a toothpick. To add dirt - you can use eye shadow in brown or gray - matte. Now twist the apron in your hands to wrinkle it and you can add wear spots with a nail file. Just sand the fabric wherever you want the worn spot.

### Tote

- Cut the piece of cotton twill to size.
- Glue contrasting fabric between dotted lines (spread a thin layer of glue on contrasting fabric).
- Glue side seams.
- Fold tote (STILL INSIDE OUT) at side seam to form a point.
- Measure width of point find 1/2" width and glue in place. Do both sides - let dry. Turn right side out.

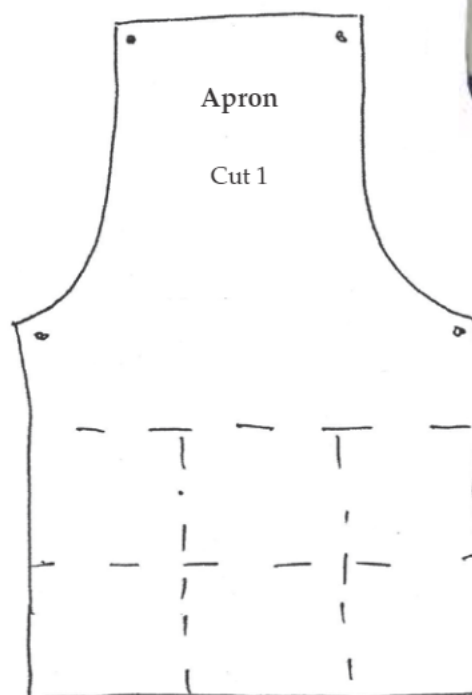
- Fold in thirds - lengthwise the 10" long strip - glue closed.
- Start at the bottom of the bag - FOLLOW DIAGRAM - glue strap to tote.

### Assorted Accessories

- Ruler - cut out and glue to a thin piece of wood.
- Cut a 1' piece of wax paper and roll up.
- Cut out the tiny mini magazines in an old magazine and glue to card stock.
- Cut out the tiny pictures of doll house and glue them to brown paper bag wrapped pieces of foam core or wood to make dollhouse kits.
- Check out all of your household brooms - plastic and natural. Use the fibers to make your paint brushes and pencils. Paint them to simulate yellow pencils and paint brushes.

Enjoy!

Ellen Scofield, Ellen's World  
353 Millbrook Rd., Hudson, NY 12534  
ellenshouse@mhccable.com  
www.ellensworld.net  
*I have 139 Ladies to choose from on my web site, and would be happy to answer any questions you have.*



NAME Cutouts  
on page 75

