

How to make a Beach Scene by Julie Stuckmeyer

Overall, this was several month's worth of work. There is a lot of waiting for stuff to dry!!!

Ocean:

First piece of advice ... Google “making miniature ocean waves” or something along those lines. I watched about a dozen YouTube videos and took various techniques from several of them. However, don't make the same mistake I made -- be sure to bookmark any you found particularly helpful!! The very first one I found was awesome and then I could never find it again!!!! 😭



Resin goes EVERYWHERE. Start by sealing the bottom of your project with silicone caulk. You REALLY do not want resin to leak!! I used a picture frame with a cardboard inset and thoroughly caulked the edge.



This was not my first venture into water. My first big water scene was Pickett Pond. For that I used Realistic Water (which you can get at any train store and most hobby shops) but that is 16 oz and costs between \$20-25 per bottle.

I had also done this half scale oceanside scene which was called Game of Stones. Once again, I used Realistic Water and swirled Scenic Fibers until I had “sort of” waves.



As you can see from the close up, it looks okay when brushing against a rock, but I was never super thrilled with that one.



This time, I wanted curved, rolling waves like you see at the ocean.

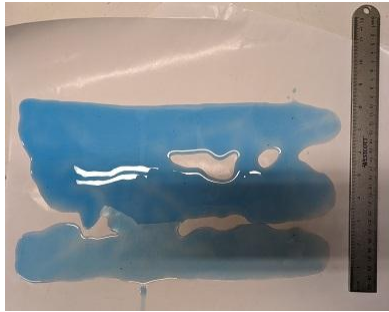


But because I'm cheap, and I knew I would need a lot of resin, I bought a big thing of two part resin from the hardware store. It cost \$75 and while mixing two-part resin is a pain (the stuff I bought was supposed to be stirred for 12 minutes!) in the long run, I was happy with my choice since I don't even think I went through half of mine ... although I don't see myself doing any water scenes in the near future!!

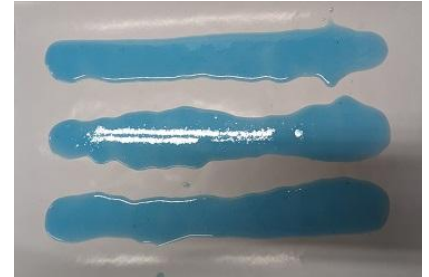


This stuff had very specific directions and at first I was hyper vigilant about making sure I had the exact same amount in both containers and transferring it to a new container like they said, but by the end I was eyeballing it and they turned out just fine! You do probably want some clear cups to mix them in. And you do not want to mix up much at a time.

I ended up pouring very thin lines of colored resin (colored mostly with alcohol ink and sometimes a bit of Gallery Glass) on parchment paper. The thinner the better especially for quarter scale. When I was preparing myself for my Create Shares, I poured these lines (~1" thick) and when I went to double check them, they had spread into one another.



I was still able to salvage some of them which I will show in the Create Shares, but truthfully they would work much better for half scale.



After pouring on to the parchment paper, let the resin set up for about 24 hours. This is not a precise thing. Usually I would go down to my work room and play with my minis for a little while. Sometime during the session, I would mix up a batch of resin and pour it onto the parchment paper. The next day when I came downstairs I would do the next step.

The resin will peel up from the parchment paper very easily after about 24 hours. I tried wax paper and aluminum foil and neither worked well for this stage. Peel up the strip of resin, cut it lengthwise if too wide, and then curl it around wax paper covered straws or dowels, tape securely, and allow to set up completely. I will demonstrate this during the Create Shares since this is a bit hard to describe in writing. Then I would glue them into place ... somewhat randomly (or that was the goal, at least!)



Then keeping in mind that while the front side of a wave is a curl, the back side is a slope. Time to backfill!! Unfortunately resin sets up way too slow for this stage, so I would put some Triple Thick behind my wave, let it set up for 30-60 seconds and then use either a paint brush or a hairdryer to get it a little wavier. Many, many, many coats later it was more of a slope.

Some of the Triple Thick ended up sort of opaque, almost whitish. So I painted on some more Gallery Glass. Do not worry if your various resin batches are different colors since ocean water isn't uniform.



Then it was time for foam and white caps. This is the part I'm least thrilled with since it doesn't look as much like white caps as I had hoped. What I did was mix white fabric paint (which is glittery and not really white but you need it for the consistency), a tiny bit of off white paint, and a bit of Gallery Glass or Triple Thick. I mixed it all together in a disposable plastic squeeze bottle. This mixture doesn't shake well so I had to use a coffee stirrer to mix it well. Then I just painted it on the tops of the waves, near the pillars and where the water touched the sand.



Sand:



I covered my base with various pieces of styrofoam and then plaster cloth. Put a thin coating of glue over the dried plaster cloth and then sprinkle a thin layer of sand over your project.



Anyone who has ever worked with sand knows it is not really even close to set up at this point. Here's my trick. Buy a scenic sprayer – available at any train store and most hobby stores – fill it halfway with either Scenic Cement or matte Mod Podge and the rest of the way with water. Shake gently and then spritz the glue water mixture over your sand. It will be more set than you believed was possible! If you want to put anything on top of your sand (my Tiki Bar, Mermaid Cottage, etc) you want to figure out where to place it before the sand sets up. You can also stick a toothpick into the sand in random paths to look like footprints, but



that didn't work so well for me although I thought it was a seriously cool trick! Paint a narrow strip near the water line with slightly darker paint (to look like wet sand).

Sea Oats:



I did my sea oats with little gizmos folded (roughly) in half. I think are called flower stamens. Put a little glue



these
they
on

each end and dip in flocking.

Put them on a craft stick with some double edged tape and spray paint both sides a light brown – tan or taupe.



Tie together with some "field grass" (I used a green thread), fold in half, put a little glue on the end, wrap in waxed paper and allow to dry. Peel off the waxed paper, cut the green thread, and plant. If you've already cemented your sand it will require drilling holes.

Good luck and feel free to reach out to me with questions! julies3333@gmail.com

A couple of pictures for reference:

