

Easy Peasy Shepherd's Pie *(will work for any scale)*

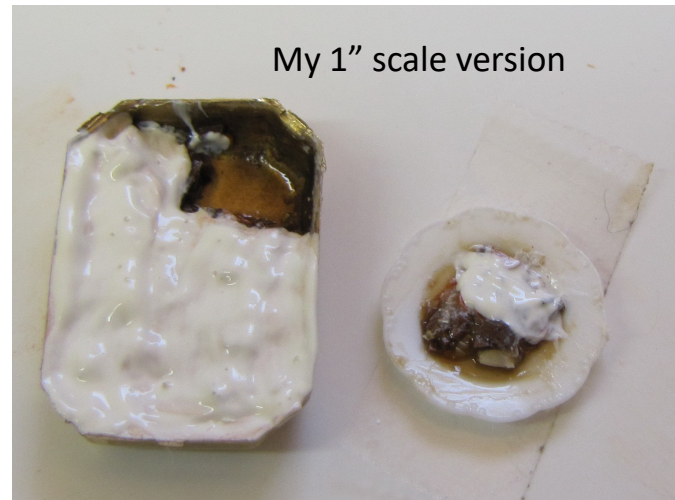
By Janet Smith

Materials Needed:

1. *Polymer Clay in Orange (for carrots), white/translucent (for onions) and brown (for cooked meat).*
2. *Cocoa Brown Gallery Glass*
3. *White Puffy Paint (for quarter scale...may want something stiffer like spackle for larger scales)*
4. *Golden Ochre Pastel chalk*
5. *Pan and plate*

Instructions

1. *Roll out the orange clay into a snake. This should be about 1/8" thick for 1" scale, 1/16" thick for half scale and 1/32" thick for quarter scale. Bake these.*
2. *In the pictures, you'll see that I used an onion cane that I had made with layers of white and translucent clay. This is overkill for this project, so a snake of baked white clay is sufficient. Size doesn't really matter because you'll be chopping it up.*
3. *Bake the brown clay as well. I did this in a small disk because it was easy to chop. Again, size doesn't matter.*



4. *Slice the cooked carrot clay. Slick the cooked onion clay and then cut into quarter as needed. And cut the cooked brown clay into little chunks. What size? You want everything bite sized for your miniature people...*
5. *Fill up your pan with these chunks of cooked clay and mix with Cocoa Brown Gallery Glass. Let sit a bit to dry.*
6. *Add a layer of white puffy paint (or spackle or whatever you normally use for frosting.) If desired...add a drop of yellow or tan paint to this before you use it so it's not quite so white (you want it the color of mashed potatoes.) Let sit. Then dust with a little golden ochre chalk.*
7. *Cut a slice out of the pan and add it to the plate. In real life, this would not be solid...so add some drops of the Cocoa Brown Gallery Glass to the plate and to the pan to make things a little messy.*

NOTE: *The rectangular pans I used were jewelry findings.*

