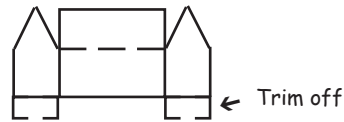
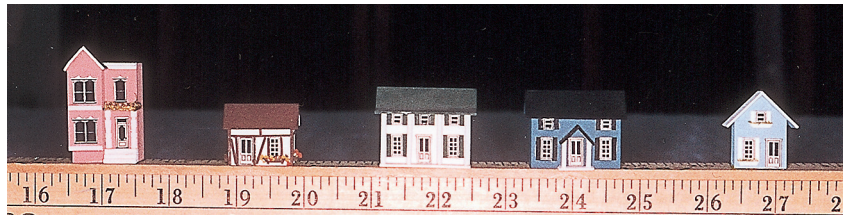


1/4" Dollhouses from Debbie Young

If you built the NAME house from the last issue, you must be needing a few 1/4" houses to go inside. No house, most especially a NAME one, is complete without a dollhouse. As you can probably tell from the photographs, these dollhouses are simply photos of the front and sides of the larger dollhouses that have appeared in the Gazette over the past several years. (Cool concept, huh!) Please do try this at home. It is a great way to personalize your own projects.

To ready these houses for assembly, copy them onto photo paper or glue these onto index card to give the houses a little stiffness. You can either use the following directions for houses with interiors or you can simply cut a solid block of wood the size of the house and glue the front and two sides onto the block.



1. On the front of all the houses except the Victorian, SCORE a horizontal line just below the roof.
2. Carefully cut out the sides and front (leaving the roof attached).
3. Onto a piece of paper, glue the front between the sides with the edges touching and the side peaks aligned with the roof. The side pieces may need to be trimmed off at the bottom.
4. Fold house at the corners and cut floors out of file card. Glue in floors and fold roof over and glue to sides.

NAME Cutouts

