

Humpback Trunk

by Lagena Chrisman, Auburn, California

SUPPLIES

TRUNK

- 1 wooden book shape
(Laura's Crafts package wood turnings item #010113)

LEATHER STRAPS

(available at art & craft supply stores)

- .015 formaline (thin leather straps)
- .031 formaline (medium leather straps)

TRUNK LOCK

- Jewelry finding

TRUNK BUCKLES

- Thin wire, about 1" (I used scrap roundwire from my dollhouse)

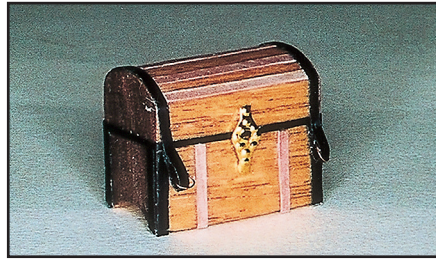
WOODEN SLATS

- Paper

- Stain of your choice
(I used Min Wax stain sticks)
- Thin Tacky Glue
- Sharp Pointed Scissors
- Ruler
- X-acto Knife
- Matt Board

PREPARATION

Stain wood and let it dry completely. Using same color stain, stain both sides of paper approximately 2" square and set aside to dry. Cut three 1/16" wide strips from stained paper, I found this easiest to do with a ruler and x-acto knife on the mat board. From jewelry finding, snip off prong for trunk clasp. Wrap thin wire around the smallest end of a sharp



toothpick several times, remove from toothpick and snip off two "O" shapes for buckles on front of trunk. Carefully look over your trunk; the backside will be just slightly taller than the front.

ASSEMBLY

LID & BOTTOM

Using the thinner leather strap (formaline .015) and starting at the center back of trunk (it is better to begin and end the strap away from a corner to ensure it will not "peel" up later), go around the trunk horizontally in a continuous piece a quarter of the way down from the top. This is what separates the lid from the bottom of the trunk. Exact measurements are not a requirement, just keep in mind that this separation line should be closer to the top than the bottom of the trunk.

SIDE STRAPS

Using the medium piece of leather (formaline .031) begin at the bottom

back left side of the trunk and carefully place the formaline along the side edge vertically, continuing up and over the top, stop at the separation line but DO NOT CUT OFF. Stay close to the edge of the wood. Without sticking the formaline down continue this same piece to bottom of trunk and cut formaline. Slip a tiny loop of wire onto the free end of the leather and very carefully fold the leather back upon itself up to the lid separation line. This end makes the buckle and will hang free. Repeat for the right side.

SIDE TRIM

Use the medium leather strip to add trim on all corners. Begin at the lid separation line and end at the bottom of the trunk. You will do six of these: two on front sides, two on left side, two on right side.

WOODEN SLATS (stained paper)

Cut four for top of trunk to fit between the leather straps and two for the front to fit from the separation line to the bottom. Run a very fine line of tacky glue along the back ridge of the trunk lid between leather straps and lay the first wooden slat. Repeat at the front ridge, and then place two more slats evenly spaced between the first two. Add two shorter slats vertically on the front of the trunk below the lid line.

Glue clasp in place, sign and date the bottom of your work and enjoy your masterpiece!