

NAME Day 2014 • "COZY CORNER" – 1/4" scale

Designed by the 2014 NAME Day Committee



Tools

- Scissors
- Sandpaper/emery boards
- Gluing square or Legos

Supplies

- Ultimate Glue or Contact Cement
- Wood Glue

Match up ALL parts with the drawings on page 33.

Carefully trim saw-cut "fuzzies" from ends with scissors. Sand pieces as needed

If staining, it is best to do so before gluing together.

1/4" scale • Cozy Corner Materials

Table:

A - Table top:

1 pc. 3/64" x 1" x 1" long

B - Pedestal:

1 pc. 1/8" x 1/8" x 5/8" long

C1 - Pedestal top supports:

2 pcs. 3/64" x 1/8" x 3/8" long

C2 - Pedestal top supports:

2 pcs. 3/64" x 1/8" x 1/8"

D1 - Longer table apron:

2 pcs. 1/32" x 3/32" x 7/8" long

D2 Table apron:

2 pcs. 1/32" x 3/32" x 13/16" long

E - Table edge trim - *mitered at both ends*

4 pcs. 3/64" half round x 1-1/16" long

F - Pedestal feet:

4 pcs. 3/64" x 1/8" x 9/32" long

Corner Bench:

G1 - Wider back - *Scribed wood – 1/8" scribe*

1 pc. 1/32" x 1-13/32" x 1-1/8" long

G2 - Back - *Scribed wood – 1/8" scribe*

1 pc. 1/32" x 1-3/8" x 1-1/8" long

H1 - Long bench seat:

1 pc. 3/8 x 5/16 x 1-3/8

H2 - Short bench seat:

1 pc. 3/8 x 5/16 x 1-1/16

I1 - Long bench seat top:

1 pc. 1/32" x 3/8 x 1-3/8" long

I2 - Short bench seat top:

1 pc. 1/32" x 3/8 x 1" long

J - Seat end:

2 pcs. 1/32" x 3/8 x 31/64" long

K1 - Wider scribed base -

Scribed wood – 1/8" scribe

2 pc. 1/32" x 1-1/16" x 3/8" long

K2 - Scribed base - *Scribed wood – 1/8" scribe*

1 pc. 1/32" x 1-1/32 x 3/8" long

L - Top shelf - *mitered at one end*

2 pcs. 1/32" x 1/8" x 1-13/32" long

M1 - Long top back trim:

1 pc. 1/32" x 3/64" x 1-3/8" long

M2 - Short top back trim

1 pc. 1/32" x 3/64" x 1-11/32" long

N - Angled end - *cut at an angle from 3/32" at top to 5/32" at bottom*

1 pc. 1/32" x 5/32 x 21/32" long

O - End baseboards:

2 pc. 1/32" x 3/64" x 3/8" long

P1 - Long baseboard:

1 pc. 1/32" x 3/64" x 1-3/32" long

P2 - Short baseboard:

1 pc. 1/32" x 3/64" x 1-1/16" long

• TABLE •



Part A

Mark an X in center of bottom of table top (A)

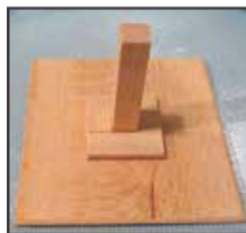
Parts E

Glue the half round to all edges

of the table. Carefully, sand smooth especially around the corners.

Parts B, C1, C2

Glue Pedestal (B) to center of table bottom using X to center it.



Glue small squares (C1) to opposite sides of the pedestal and to the table.

Glue other supports (C2) to other sides of the pedestal, forming a square around the Pedestal.



Parts D

Glue D1s to D2s forming a square. Center this square on the under side of the table evenly and glue down to form a "table apron."

Part F

Use an emery board to bevel one end of each foot.

Glue the flat end of each piece to the bottom of the pedestal. This is the Pedestal base.

• BENCH •



Parts G1 & G2

Glue Shorter Back (G2) to Longer Back (G1). Grain goes side to side. Use a gluing jig to be sure it's squared up.



Part H1 & H2

Glue H1, long bench seat, on right onto right back.

Glue H2, short bench seat, on left onto left back and onto long bench seat.



Parts I1 & I2

Glue I1, long bench seat top, to top of H1, long bench seat.

Glue I2, short bench seat top, to top of H2, short bench seat.

— Continued on next page

Cozy Corner 1/4" scale

— Continued from page 28

Parts K1, K2

Glue wider scribed base to the front of long bench seat. Repeat with shorter scribed base on short bench seat.



Part L

Glue the Top Shelves onto the top, meeting the miter at the corner. Glue it flush to the back wall so it sticks out over the bench.

Parts M1 & M2

Glue the long & short top back trims right under the top shelves



Part J

Hold the two Bottom End Pieces (I) together and round the front top corner by using an emery board or sanding block.

Glue tightly to the bottom end of the bench, flush with the back edge.



Parts N

Hold the 2 N pieces together. Sand a curve into the top corner of the angled side. Do both pieces together so the curve will be the same on both.

Glue on top of Bottom End pieces and to the back and top trim.



Parts O, P1, P2



Glue End Baseboards (O) on first.

Glue Long baseboard to one bottom. (P1)

Now the last baseboard on the other side. (P2)

Your unit is done and ready to paint or otherwise finish.

NAME Day 2014 • "COZY CORNER" – 1/2" scale



Tools

- Scissors
- Sandpaper/emery boards
- Gluing square or Legos

Supplies

- Ultimate Glue or Contact Cement
- Wood Glue

Match up ALL parts with the drawings on page 34.

Carefully trim saw-cut "fuzzies" from ends with scissors. Sand pieces as needed

If staining, it is best to do so before gluing together.

1/2" scale Cozy Corner Materials

Table:

A - Table top
1 pc. 1/16" x 2" x 2" long

B - Pedestal

1 pc. 1/4" x 1/4" x 1-1/4" long

C1 - Pedestal top supports

2 pcs. 3/32" x 1/4" x 3/4" long

C2 - Pedestal top supports

2 pcs. 3/32" x 1/4" x 1/4" long

D1 - Longer table apron

2 pcs. 1/16" x 1/8" x 1-3/4" long

D2 - Table apron

2 pcs. 1/16" x 1/8" x 1-5/8" long

E - Table edge trim - *mitered at both ends:*

4 pcs. 1/16" half round x 2-1/8" long

F - Pedestal feet

4 pcs. 3/32" x 1/4" x 1/2" long

Corner Bench:

G1 - Wider back - *Scribed wood - 1/4" scribe*

1 pc. 1/16" x 2-13/16" x 2-1/4" long

G2 - Back - *Scribed wood - 1/4" scribe*

1 pc. 1/16" x 2-3/4" x 2-1/4" long

H - Spacers under seat

4 pcs. 3/16" x 3/4" x 19/32" long

I1 - Long bench seat

1 pc. 1/16" x 3/4" x 2-3/4" long

I2 - Short bench seat

1 pc. 1/16" x 3/4" x 2" long

J - Seat end

2 pcs. 1/16" x 3/4" x 7/8" long

K1 - Wider scribed base -

Scribed wood - 1/4" scribe

2 pc. 1/16" x 2-3/8" x 3/4" long

K2 - Scribed base - *Scribed wood - 1/4" scribe*

1 pc. 1/16" x 2-1/16" x 3/4" long

L - Top shelf - *mitered at one end*

2 pcs. 3/64" x 1/4" x 2-13/16" long

M1 - Long top back trim

1 pc. 3/64" x 3/32" x 2-3/4" long

M2 - Short top back trim

1 pc. 3/64" x 3/32" x 2-11/16" long

N - Angled end - *(cut at an angle from 7/32" at top to 5/16" at bottom)*

1 pc. 1/16" x 5/16" x 1-7/16" long

O - End baseboards

2 pc. 3/64" x 3/32" x 3/4"

P1 - Long baseboard

1 pc. 3/64" x 3/32" x 2-5/32"

P2 - Short baseboard

1 pc. 3/64" x 3/32" x 2-3/32"

• TABLE •



Part A

Mark an X in center of bottom of table top (A)

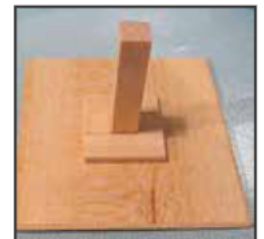
Part E

Glue the half round to all edges of the

table. Carefully, sand smooth especially around the corners.

Parts B, C1, C2

Glue Pedestal (B) to center of table bottom using X to center it.



Glue small squares (C1) to opposite sides of the pedestal and to the table.

Glue other supports (C2) to other sides of the pedestal, forming a square around the Pedestal.

— Continued on next page

NAME Day 2014 • "COZY CORNER" – 1/2" scale

Cozy Corner 1/2" scale

— Continued from page 29



Part D

Glue D1s to D2s forming a square. Center this square on the under side of the table evenly and glue down to form a "table apron."

Parts E

Do not remove tape from these 4 parts. They are roughly curved at one end. Use a sanding block or emery board to even up the curve and make it smooth.



Glue each piece to the bottom of the pedestal. This is the Pedestal base.



Parts G1 & G2

Glue Shorter Back (G2) to Longer Back (G1). Use a gluing jig to be sure it's squared up.

Part H

On both ends, glue the cut edge of the spacer to back right at the end. Be sure the spacers don't overlap the edge of the back.



Glue another spacer about 1-3/8" in from the corner. Be sure the spacers don't overlap at the ends.

Parts I1 & I2

Glue long bench seat to long side and to the tops of the spacers. Glue short bench seat to short side.



Parts K1, K2

Glue wider scribed base to the longer side of bench under seat and glue to the spacers. Repeat with shorter scribed base.



Parts L

Glue the Top Shelf onto the top, meeting the miter at the corner. Glue it flush to the back wall so it sticks out over the bench.

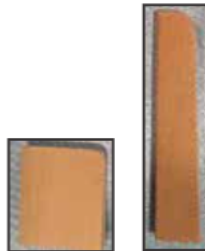
Parts M1 & M2

Glue the long & short top back trims right under the top shelf.

Part J

Hold the two Bottom End Pieces (J) together and round the front top corner by using an emery board or sanding block.

Glue tightly to the bottom end of the bench, flush with the back edge.



Parts N



Hold or tape the 2 N pieces together. Sand a curve into the top corner of the angled side. Do both pieces together so the curve will be the same on both.

Glue on top of Bottom End pieces and to the back and top trim.

Parts O, P1, P2



Glue End Baseboards (O) on first. Glue Long baseboard to one bottom. (P1)

Now the last baseboard on the other side. (P2)

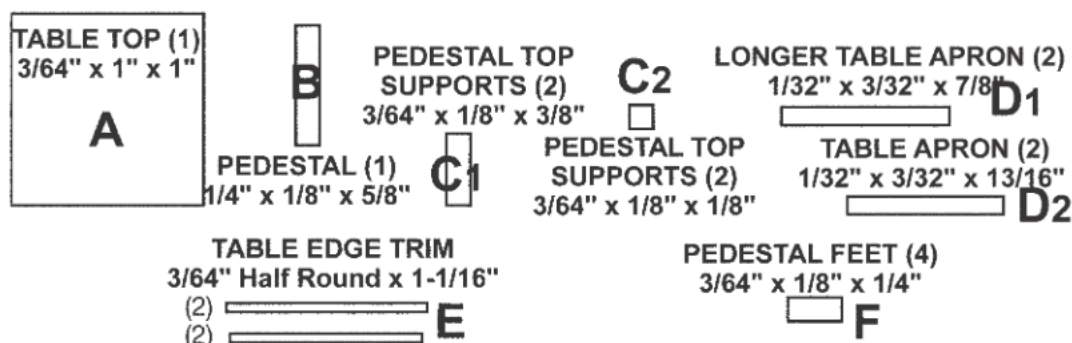
Your unit is done and ready to paint or otherwise finish.



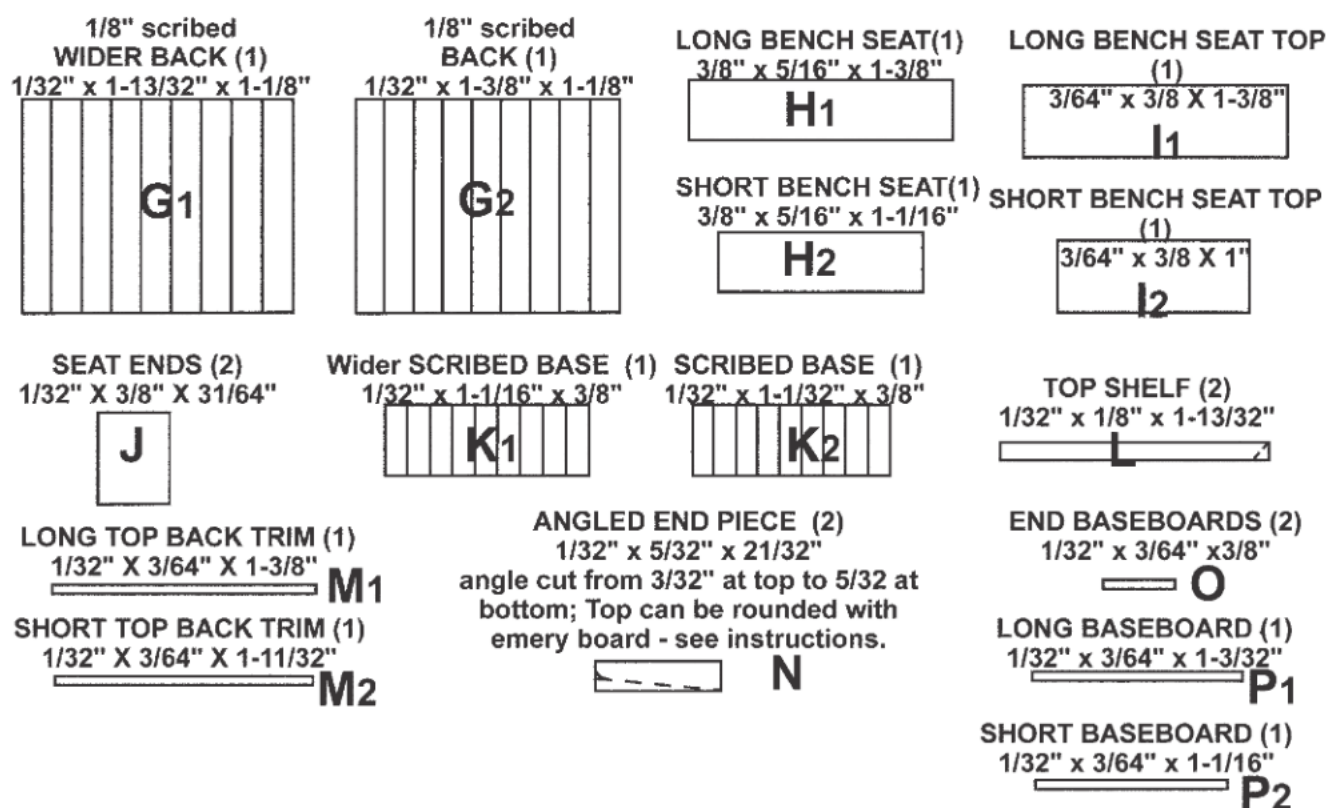
1" scale Cozy Corner Diner by Ruth Heisch. Ruth bought the corner background at a show thinking it had possibilities. When she saw the NAME DAY project it was the perfect fit. Ruth was further inspired by her club's event theme, "DINING OUT" and her Coca Cola collection.

NAME Day 2014 • "COZY CORNER" – 1/4" scale

1/4" COZY CORNER TABLE



1/4" COZY CORNER BENCH



Share your projects with other NAME members.



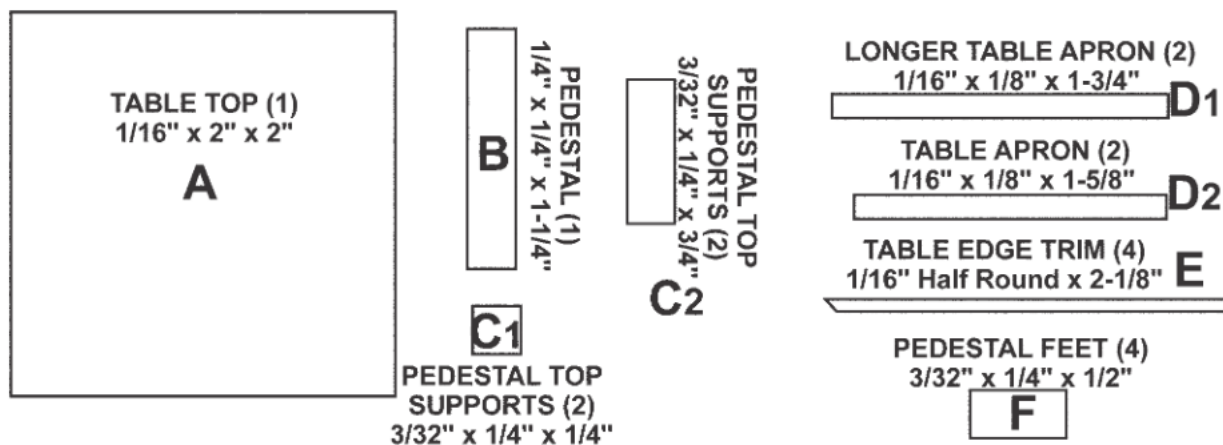
Send your photos and/or workprojects to:
Dorothy Hansen, Gazette Editor, PO Box 1285, Monroe WA 98272
Email: Gazette@miniatures.org

Copy and Ad Deadlines

January/February: October 1
March/April: December 1
May/June: February 1
July/August: April 1
September/October: June 1
November/December: August 1

NAME Day 2014 • "COZY CORNER" – 1/2" scale

1/2" COZY CORNER TABLE



1/2" COZY CORNER BENCH

