

Baby Ben Clock out of a Tuna Can (Something out of Nothing)



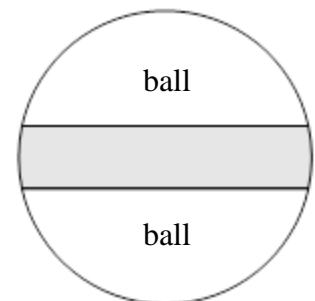
Materials and Supplies Needed:

Empty tuna can
Ping pong ball
Piece of heavy wire
(chunk of a coat hanger will do)
Pony beads in small and regular sizes
Silver spray paint
(I used Krylon original chrome)
Cereal box cardboard. Shirt cardboard,
poster board, whatever is handy
Wallpaper or other graphics
E6000 or other heavy-duty glue
Wallpaper paste

1. Open and empty the tuna can. (I used a small size but you could make a bigger one from the family sized can. Just trace the can on scrap paper to make a bigger pattern). Peel off the label. Wash the tuna oil away and let it get completely dry.

Note: it turns out that my can was NOT exactly round, so be sure to trace and dry fit to your tuna can.

2. Cut the ping pong ball in half along the seam. I used a craft knife to cut it in half and scissors to cut the bells to size. The “bells” should not be wider than the edge of the can so I marked a pencil line where I wanted to cut the excess away. See the diagram.



3. Cut a small piece of dowel for each bell. Stand it in the inside center and mark the length to hold it about 1/8 above the can edge. Cut it to the correct length and glue the small piece of dowel to the inside center of the bell.

4. It is difficult to glue a bell to the curved surface of the can if you can't hold it upright. (See the photo.) I used a plastic cup to hold the can in the right position, glued on the first bell, let it dry, moved the can to make the second bell easier to glue and glued in the second bell.

5. Top each bell with a small pony bead.

6. Once you have the bells secure, turn it upside down and glue on the large pony bead feet.

7. Last, bend the wire to a curve to fit between the bells and glue the wire into place.

8. When every glued part is secure and the glue is dry, use spray paint to paint everything silver.

9. Using the patterns provided, cut a piece of scrap cardboard, poster board, cereal box, whatever you have on hand, to fit the inner side of the can. This will support the floor. Cut the inner back wall piece out of cardboard or poster board. Cut 2 cardboard half circle support pieces. And cut the floor cardboard.

10. Dry fit all the pieces at each step before gluing into place.

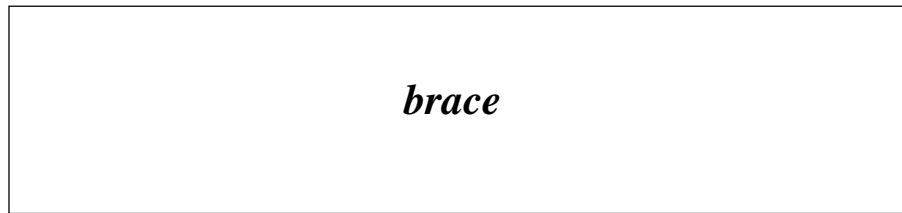
11. Cut your choice of wallpaper or graphic design to fit the inside back interior. Cut a strip of wall paper to fit the inside wall of the can. Cut the finished choice of paper for the floor. And cut your choice of Graphic or wallpaper for the front half circle.

12. Wallpaper your back wall taking care to glue it in with the top and bottom lining up with the bells and feet. Wall paper the interior can walls.

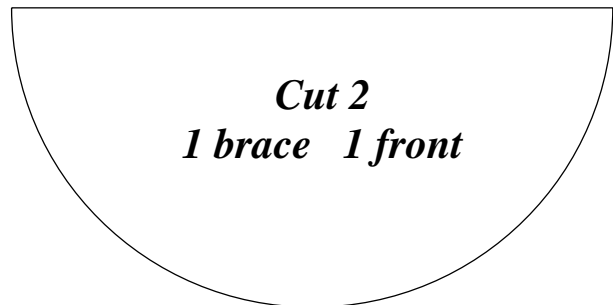


*pattern for inside
and back of can*

13. Start the bracing by gently curving the cardboard bracing strip with your fingers and then gluing in your bracing strip. Glue in the rear half circle.



14. Wallpaper the front half circle and glue it in place.



15. Glue your choice of flooring to the floor piece and glue the floor in place.



(optional, find a clock face you like and glue it to the rear of the clock.)

Add whatever accessories or furniture you like to finish your piece. What fits a clock display? Well, what about an outhouse, time to go, lol. Or wings, time flies? Maybe the night before Christmas? A bedtime story! I used mine to display my New Year's Eve hats