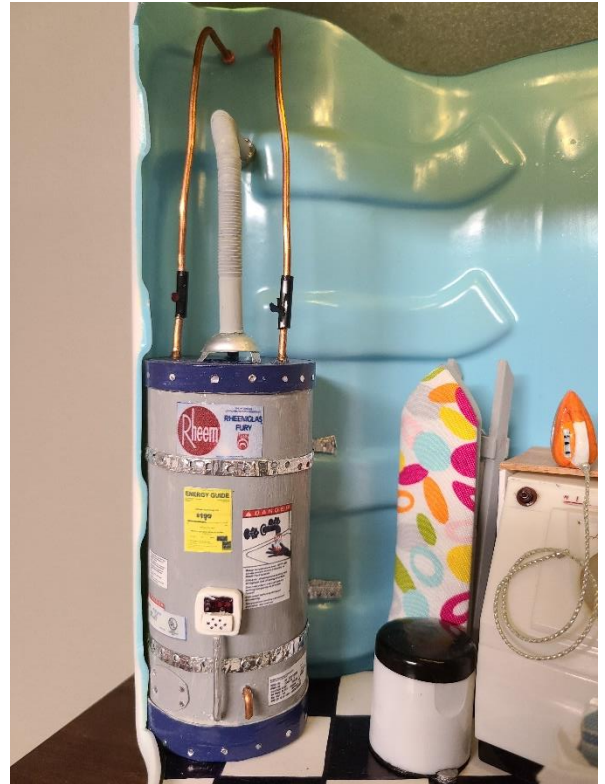
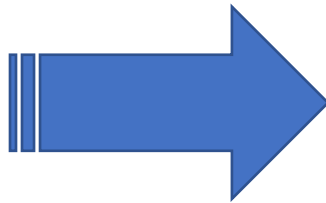


Something out of Nothing from Terri Howard



This is 1:12 scale water heater started out as a toilet tissue roll. I covered it in cardstock paper to make it smooth then painted it gray. I used a circle cutter to create the end caps from poster board and created the edge with paper strips. The end caps were painted blue then the whole thing was coated with gloss modge podge. The exhaust pipe is a plastic bendy straw and a plastic cap from a milk jug. The "water pipes" are pieces of copper wire and the shut off valves on the copper wire are pieces of plastic straw and a section of a flower punch. The temperature gauge is polymer clay and the "stickers" are images from Google images. The metal security straps are strips of aluminum foil with holes punched.